

## Flexible fix point multi supports.

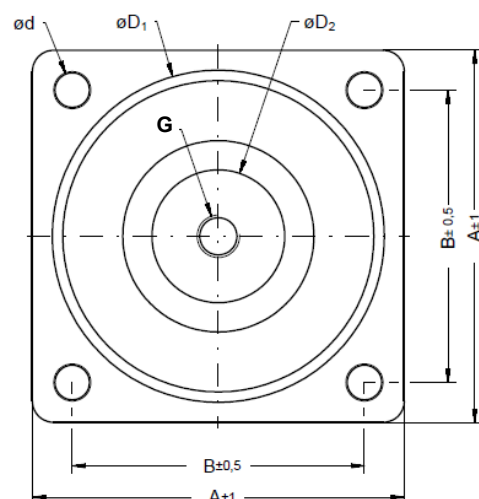
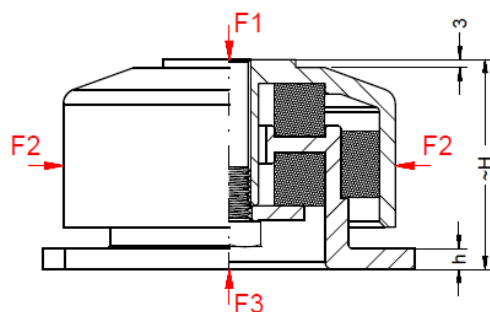
### All-metal type

#### Description

- Multiple load directions.
- High static and dynamic load bearing capacity.
- High stability
- Ageing resistance
- Natural frequency: 15 - 20 Hz

#### Material:

Housing:  
Cast iron, black KTL painted.  
All-metal cushion:  
Stainless steel wire



#### Applications

Resilient suspension of

- rotating machines, motors, pumps, diesel electric sets
- exhaust pipes, boilers, silencers etc.

#### Mounting instruction:

All bolts must be secured with Loctite 620 or equal.  
Loctite 620 is only usable by temperatures lower than 220° C.  
Otherwise other alternatives must be used.  
Mounting examples see previous pages .



Type no.	Stock No.	A	B	H	h	G	ød	øD <sub>1</sub>	øD <sub>2</sub>	Mass	Static load [daN]			Max. dyn. load [daN]		
		[mm]	[mm]	[mm]	[mm]		[mm]	[mm]	[mm]		kg	F1	F2	F3	F1	F2
<b>FM 1212</b>	FM 1212	100	80	57	8	M12	11	93	52	1,9	50-250	250	250	500	1250	500
<b>FM 1216</b>	FM 1216	140	110	79	8	M16	13	125	50	3,6	100-700	1500	700	3500	7500	2100
<b>FM 1218</b>	FM 1218	140	110	79	8	M16	13	125	50	3,7	500-1500	1500	1500	7500	7500	3000
<b>FM 1224</b>	FM 1224	200	160	93	10	M24	17	180	75	9,5	1500-3500	3500	3500	17500	10000	7000